

# KIT-MIX80

## MIX OF PRODUCTS Ø80



**N°10 Pipes M/F Opaque Black  
Carbon Steel Sp.1,2 L=1000mm**



**N°30 Pipes M/F White  
PPs L=1000mm**



**N°09 Pipes M/F Opaque Black  
Carbon Steel Sp.1,2 L=500mm**

**N°18 Pipes M/F White  
PPs L=500mm**



**N°04 Tee F/F/M  
Opaque Black  
Carbon Steel  
Sp.1,2**



**N°04 Condensing  
Drain Plugs Opaque  
Black Carbon Steel  
Sp.1,2**



**N°04 Bends 45°  
M/F Opaque Black  
Carbon Steel Sp.1,2**



**N°08 Bends 90° M/F  
Opaque Black  
Carbon Steel Sp.1,2**



All the illustrated material will be  
supplied on Pallet  
Dim. 80 x 120 h 145cm  
COMPOSITION NOT BE CHANGED



**N°20 Steel Wall  
Bracket Opaque Black**



**N°08 Stainless Steel Air  
Inlet/Flue Outlet  
Horizontal Terminals  
Opaque Black**



**N°10 Pipes M/F White Extruded  
Aluminium L=1000mm**

**N°09 Pipes M/F White Extruded  
Aluminium L=500mm**



**N°20 Wall Covers  
Black Silicon**



**N°15 Bends 45° M/F  
White Die-Casted  
Aluminium**



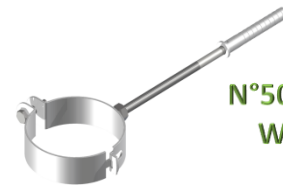
**N°20 Bends 90° M/F  
White Die-Casted  
Aluminium**



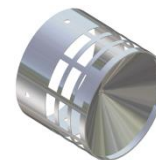
**N°40 Bends 87°  
M/F White PPs**



**N°15 Bends 45°  
M/F White PPs**



**N°50 White Steel  
Wall Bracket**



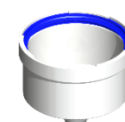
**N°20 Stainless Steel  
Flue Outlet Terminal**



**N°40 Wall  
Covers  
White EPDM**



**N°02 TEE M/M/F  
White Die-Casted  
Aluminium**



**N°02 Condensing  
Drain Plug White  
in PA**



**1220,00 €**

**SPECIAL PACKAGING**  
*Make the right choice*  
*Optimize your purchases*